

35-Foot Heavy Duty Naval Whip Antenna

A rugged 35-foot epoxy fiberglass whip antenna designed for naval shipboard HF communications, offering wide frequency coverage, high power handling, and proven reliability.



BROADBAND COVERAGE

Operates across 1.6–30 MHz (with tuner), supporting broadband HF communications.



HIGH POWER HANDLING

Supports up to 5000 W average RF power



RECEIVE AND TRANSMIT

Designed for both transmitting and receiving HF signals.



SHIPBOARD ANTENNAS

Built to meet Navy requirements

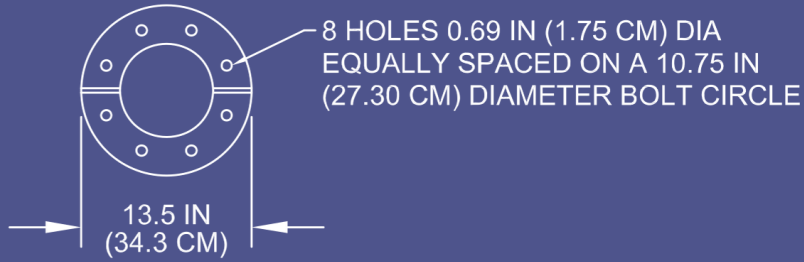
U.S. Patents: 3725944 & 4500888



AS-2537C/SR

35-Foot Heavy Duty Naval Whip Antenna

NSN: 5985-00-431-8743



BOTTOM VIEW

KEY CHARACTERISTICS

AS-2537C/SR

Frequency Range (with tuner) 1.6 MHz – 30 MHz

Power 5 KW

Height 36ft

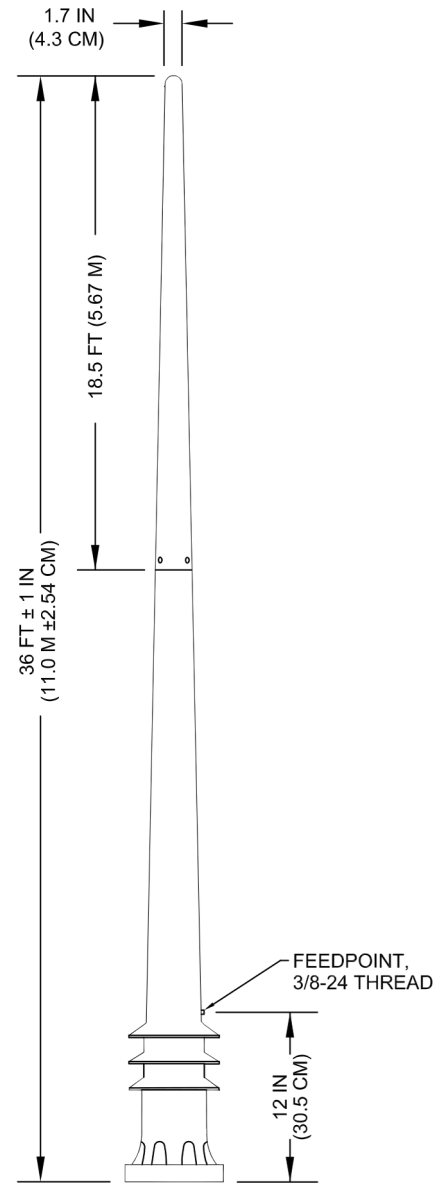
Weight 141 lbs

VSWR Determined by tuner

Polarization Vertical

Azimuth Coverage Omnidirectional

Integral Base / Insulator Epoxy Fiberglass



IDEAL FOR:

- Shipboard HF communications
- Harsh naval environments
- Long-range maritime operations
- Navies requiring rugged, proven antennas

Heavy-duty naval HF whip antenna designed for broadband shipboard communications with minimal maintenance and long operational life.