

VBBA2-30

35-ft Broadband HF Tactical Whip Antenna



BROADBAND COVERAGE

Operates from 2–30 MHz with no tuner required



HIGH POWER HANDLING

Supports up to 3000 W average RF power



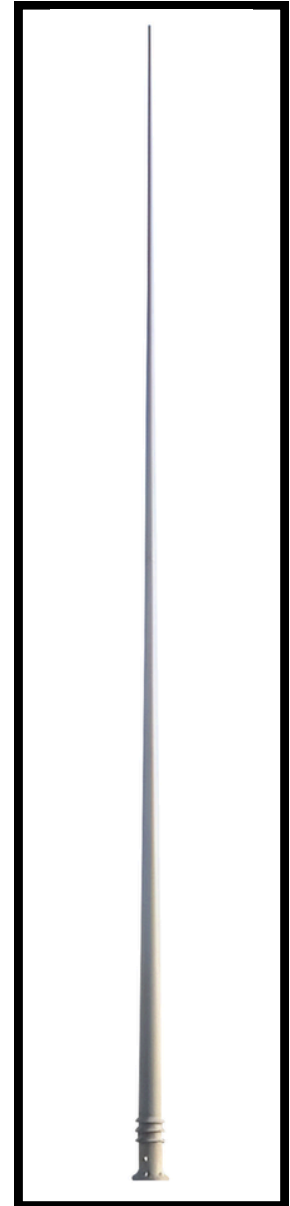
LIGHTNING PROTECTION

Integrated DC static short for safety and durability



SHIPBOARD ANTENNAS

Built to meet Navy requirements



A rugged, self-supporting 35-foot broadband HF whip antenna designed for high-power tactical and naval applications, including Electronic Countermeasure (ECM) systems.

35-FOOT BROADBAND HF WHIP



Constructed with a precision-engineered aluminum radiating element and a durable fiberglass base and insulator, the VBBA 2-30 is built to withstand extreme environmental and operational conditions. The integrated DC static short provides effective lightning protection at the feedpoint. Designed for seamless integration, the VBBA 2-30 uses the standard AS-3772B/U mounting pattern, making it easy to retrofit into existing shipboard or ground installations.

KEY CHARACTERISTICS

	VBBA2-30
Frequency Range (no tuner)	2 – 30 MHz
Power	3 KW
Height	35ft
Weight	250lbs
VSWR	<2.0:1
Polarization	Vertical
Azimuth Coverage	Omnidirectional
Integral Base / Insulator	Epoxy Fiberglass

Operating across the full 2–30 MHz HF band, this antenna delivers consistent performance with a nominal 50-ohm input impedance and VSWR of 2:1 or better, without the need for an external tuner.