

54-Ft Self-Supporting Whip Antenna

A 54-foot self-supporting epoxy fiberglass whip antenna, field-proven for military and commercial communications, offering wideband coverage (600 kHz–30 MHz with tuner) and high power handling up to 10 kW average.



BROADBAND COVERAGE

Operates 600 kHz–30 MHz with tuner



HIGH POWER HANDLING

Supports up to 10 kW average RF power



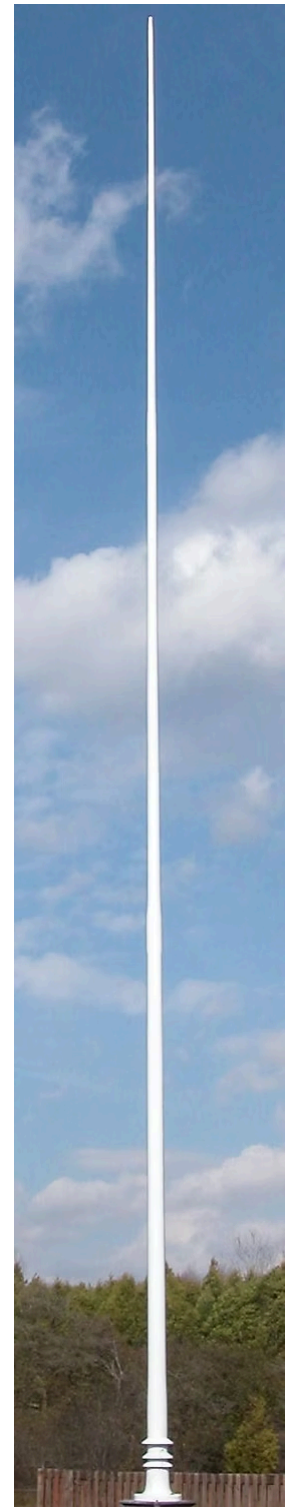
WEATHERPROOF CONSTRUCTION

Built for long-term reliability in extreme environments



SHIPBOARD ANTENNAS

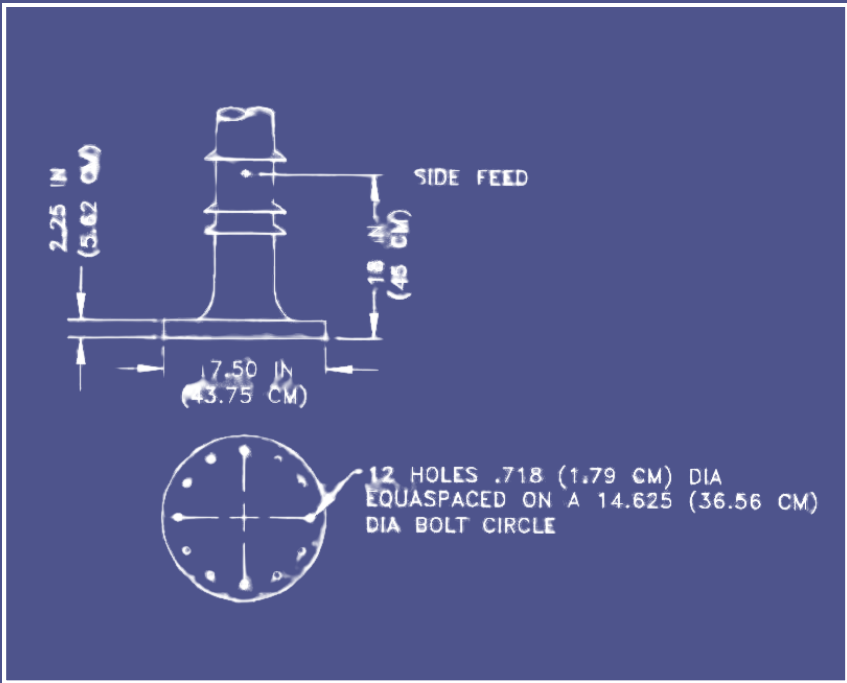
Built to meet stringent U.S. Military requirements



AS-5088/FRC

54-Ft Self-Supporting Whip Antenna

NSN: 5985-21-872-6360



KEY CHARACTERISTICS

AS-5088/FRC

Frequency Range (with tuner) 600 kHz – 30 MHz

Power 10 KW

Height 54.3ft

Weight 251 lbs

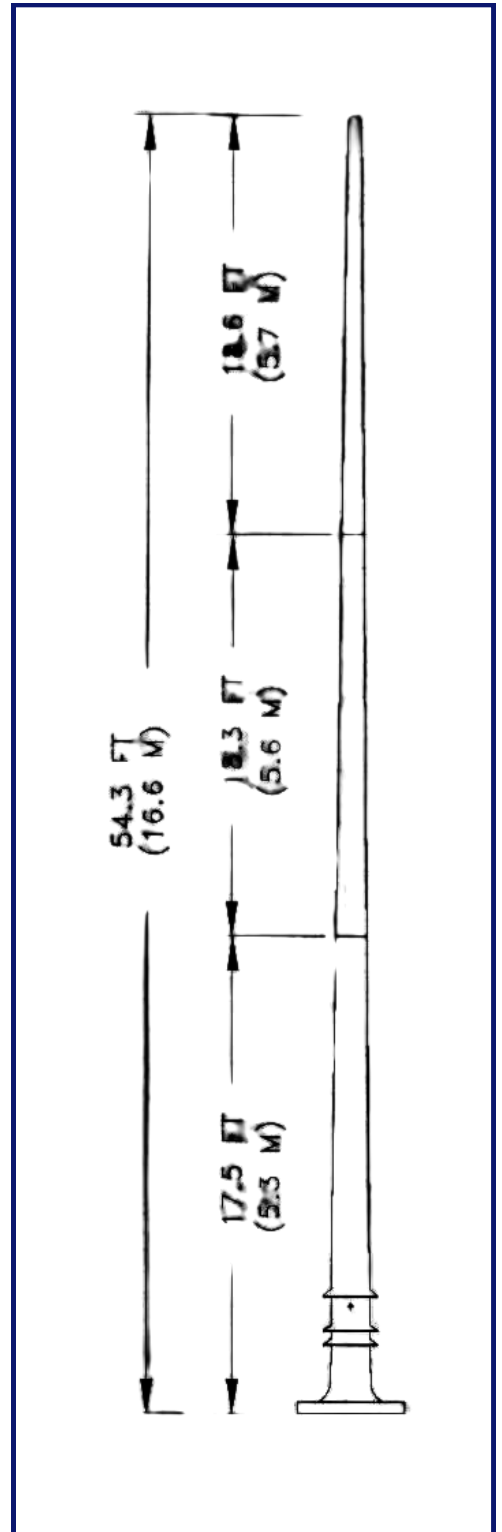
VSWR Determined by tuner

Polarization Vertical

Azimuth Coverage Omnidirectional

Integral Base / Insulator Epoxy
Fiberglass

The AS-5088/FRC is a self-supporting, heavy-duty HF whip antenna designed for shore, shipboard, and civil communication applications requiring reliability under extreme conditions.



IDEAL FOR:

- Shore-to-ship HF links
- Aviation ground-to-air communications
- Civil defense and emergency networks
- Military field operations